

# ANT

# MARINE

interior design



“Your solution partner in the infinity of design”



“... present innovative solutions modern designs.”





# ANT MARINE

Türkiye'nin en önde gelen tersanelerinde başlamış olduğumuz sektörel aktivitelerimizde gelinen tarihten itibaren 22 yılı geçmiş bulunmaktayız.

Proje sürecinde; tasarım ve müşteri onayı ile başlayan serüven garanti sürecini kapsayacak şekilde devam etmektedir.

Proje tasarım ve uygulama çabamızın iskeletini; 20 yılı aşan deneyimimiz ve tecrübemizin yanında uluslararası tasarım ve uygulamalara katkı sunan gelişime açık ekibimiz oluşturmaktadır.

Takım ve ekip çalışması ruhunda, teknolojik yenilikleri, gelişmeleri takip eden, düşünce ve çabalarımız devam edecektir.

Tasarımın sınırsız ufkunda; uluslararası kurallar dahilinde, kaliteden ödün vermeden yol alma çabamız ve azmimiz ilkimizdir.

Müşteri memnuniyetini ön planda tutarak sektörümüze katma değer sağlamak gibi etkinliğimizin olduğunun farkındalığını tüm çalışma arkadaşlarımıza hissettirmek çabamızdır.

Emeğe, doğaya, zamana saygının; insanlığa saygı olduğunun bilincindeyiz. Bu bağlamda sektörümüze kaliteli işler kazandıran tüm paydaşlarımıza, şükranlarımızı arz ederiz.

Müşterimizin istek ve tercihinin en sağlıklı tasarım ile katkı sunup, düşünce ve beklentilerine cevap vermek koşulsuz görevimizdir.

As of today, we have passed 22 years of our sectoral activities that we started in Turkey's leading shipyards.

In the project process; the adventure that started with the design and customer approval continues to cover the warranty period.

20 years of experiences together our innovative team contribute international applications and designs what create context of the Project design and application effort.

In the spirit of team and teamwork, our thoughts and efforts will continue, following technological innovations and developments

In the limitless horizon of the design; within the international rules, our effort and determination is our principle to proceed without compromising quality.

We strive to make all employees feel aware of the fact that we are active, such as providing added value to industry, by prioritizing customer satisfaction.

Respect for labor, nature and time; We are aware of the respect for humanity. In this context, we would like to express our gratitude to all our stakeholders who bring quality work to our industry.

It is our unconditional duty to contribute to the wishes and preferences of our customers with the healthiest design and to respond to their thoughts and expectations.

## BİZ KİMİZ ?

ANTDENİZCİLİK, 1988'den beri iç mimari alanında edinilen deneyimlerinin ve üretiminin sonucu 2002'de Tuzla İstanbul'da kurulmuştur. Gemi mobilya üretimi ve iç mimarisi alanında hizmet veren Türkiye'nin öncü kuruluşlarından biridir. Ayrıca izolasyon, dekoratif panel, havalandırma, ince sac kaplama, zemin kaplama gibi proje aşamaları da uzmanlık kapsamındadır.

ANTDENİZCİLİK; tanker, römorkör, askeri gemiler, konteyner gemileri, motor yat, feribot, deniz otobüsleri, balıkçı gemileri gibi farklı kapasitede deniz araçlarında projelendirme yapmaktadır. İngiltere, Almanya, Fransa, Kanada, Mısır, Türkmenistan, Rusya, Hollanda, Azerbaycan, Danimarka, Norveç, Avustralya gibi dünyada 20'yi aşkın ülkeye ait projelere katkı sağlamıştır.

ANT DENİZCİLİK; proje analiz, tasarım ve proje uygulama aşamalarında görevli 150'yi aşkın çalışanıyla teslim öncesi ve sonrası da hizmet vermeye devam eder. Tasarımdan kullanılan malzemeye, imalattan montaja, teslim öncesi ve sonrası danışmanlık hizmetine kadar projenin her sürecinde kalitenin sürekliliğini sağlar. Verdiği hizmet ISO- 9001 sertifikasıyla tescillenmiştir. Ayrıca yurtiçi ve yurtdışı AR-GE, fizibilite çalışmalarıyla uluslararası standartlarda sağladığı marka değeri ve kalitesini belgelendirmeye odaklanmıştır.

## VİZYONUMUZ

İnovatif düşüncelerle kural bütünlüğü içinde tasarladığımız projelerimiz ile tüm dünyada gemilerin konfor, teknoloji, tasarım açısından üretimine katkıda bulunan, tercih edilen öncü firma olmak

## MİSYONUMUZ

Üstlendiğimiz tüm projelerde tecrübelerimizi yansıtmak, kural bütünlüğünden ve kalitemizden ödün vermeden, projenin tüm süreçlerinde müşteri memnuniyetini ve güvenini sağlamak

## WHO ARE WE ?

ANT MARINE was established in Tuzla Istanbul in 2002 as a result of its experience and production in interior design since 1988. It is one of the leading companies in Turkey, serving in the field of ship furniture production and interior architecture. In addition, project stages such as insulation, decorative panels, ventilation, thin sheet metal coating, floor covering are also within the scope of expertise.

ANT MARINE makes projects for marine vehicles of different capacities such as tankers, tugboats, military ships, container ships, motor yachts, ferries, sea buses, fishing vessels. He has contributed to the projects of more than 20 countries in the world such as England, Germany, France, Canada, Egypt, Turkmenistan, Russia, Netherlands, Azerbaijan, Denmark, Norway and Australia etc.

ANT MARINE It continues to serve before and after delivery with its more than 150 employees working in project analysis, design and project implementation stages. It ensures the continuity of quality in every process of the project, from design to the materials used, from manufacturing to assembly, to pre-delivery and post-delivery consultancy services. The service it provides has been registered with the ISO-9001 certificate. In addition, it has focused on certifying the brand value and quality it provides at international standards with its domestic and international R&D and feasibility studies.

## OUR VISION

Be leading company is contributed ship production in terms of comfort, technologic, design at world wide with projects are designed in the innovative ideas and rules.

## OUR MISSION

To reflect experiences at the taking on our all projects, to provide satisfaction and confidence of customer in the all project steps without compromising our rule integrity and quality.



DESIGN OFFICE

A working environment that provides flexibility and efficiency with its transparent and transitive design...





PRODUCTION AREAS: WORKSHOPS



Woodworking working area is an area with 3000 m2 closed and 1000 m2 open area, high-capacity woodworking and furniture machines with different functions. The pre-assembly phase is completed with the circulation of the process stages such as cutting, sizing, and massaging the material. Accessories are added and production is disassembled.

In our flooring unit, outdoor and indoor, upholstery and drapery textile products are applied according to the project scope and the approval in the design. Upholstery and seating group production continues in this workshop.

Ant Denizcilik; It guarantees its service quality with its professional production staff who are specialized in their field. By following the sectoral developments, it reflects the innovations to the design and production stages in the most appropriate way.

Especially; It systematically monitors the project processes from the project design and approval stage to the procurement of materials, from the material processing production stage to the shipment of the products to the project area, maximizing the time-quality-compliance ratio in the projects for which interior design is made in line with customer demands. In addition, it continues the service process after delivery for all the projects it designs and produces.



Upholstery Workshop

Woodworking Workshop



“ Together we are the solution contractor of aesthetics and quality...”



Staff lounges are one of the common areas where they can meet their needs such as resting, eating and drinking at certain times of the day.

Normal room temperature should be balanced, fresh air space should be created with ventilation, and a light-controlled environment should be provided with the right material selection.

It is important to produce furniture with certified and relevant class approved material selections. Modern furniture designs that are ergonomic, compatible with sea and weather conditions and offer different alternatives should be made.



## AS RECREATIVE AREA DESIGN “SHOWROOM REST AREA”

The conditions of the living spaces in sea vehicles are very important for the people who will live there, even for a certain period of time. The health and working efficiency of ship workers is proportional to the quality and conditions of the environment in these areas.

Living spaces should be allocated according to the classes and numbers of employees on each ship . Planning should be made according to the functional and quantitative diversity in living spaces.

While technical volumes are determined according to the class and capacity of the marine vehicle, living spaces are created



In addition to the technical features, the saloons allow the ship's personnel to do social activities. It is the place where social interaction is highest. These places, where different stories and different events are told and shared, are actually the indicators of the life adventure of the ship.

The interior design in the dining room can be created with more standard lines compared to other spaces.

Messroom in our showroom is divided into two functions as eating area and TV watching-rest area. Continuity in the furniture line is foreseen in the decoration.

Warmth has been added to the environment with the selected wood tone. A smooth transition between leather upholstery and fabrics has been achieved and a balance element has been achieved.

We welcome your comments for similar





In order to keep the comfort, health and working efficiency of the ship crew at an optimal level, the interior design of these special areas where they spend about a third of the day meeting their personal needs is one of the most important items.

Chamber dimensions should not be below the minimum dimensions and should not fall below the standard area. Living spaces are designed according to the user profile and number. Furniture dimensions and design are determined by this standard parameter.

Furniture accessory details and features are important in terms of suitability for use in different climatic conditions. The accessories used must be compatible with marine criteria.



## AS A CUSTOM AREA DESIGN "SHOWROOM CAMARA"

In our showroom, there is one single-person cabin in standard room sizes.

Sleeping areas in marine vehicles are the most abundant areas. These areas should be positioned so that access to common areas is easy and comfortable. It should not be near noisy technical units and service passages .



Cabins; it should be thought and designed only according to the vital need. This place should accommodate the comfort that will ensure the continuity of the employees after work. Reading, Therefore, a combination of different functional and dimensional furniture should be provided.

In the cabin in our showroom, wood texture was chosen that is both warm and not sharp, giving the room a feeling of spaciousness. This wood tone is balanced by the clarity of the flooring.

There is continuity in the furniture sequence. Bed, desk and shelf and work unit, cabinet with doors and drawers form a furniture axis.

The difference in level in front of the porthole is the asymmetrical detail that adds aesthetics to the design.

Safety in moving places should always be a priority .

A working environment that provides flexibility and efficiency with its transparent and transitive design...









































































*All together in the sectoral adventure;  
our route is quality*



### OUR FIELD ACTIVITIES..

DENİZ MOBİLYALARI  
( MARINE FURNITURE )

İZOLASYON  
( ISOLATION )

DEKORATİF PANEL  
( DECORATIVE PANEL )

HAVALANDIRMA  
( AIR CONDITIONING )

İNCE SAC KAPLAMA  
( DECORATIVE SHEET COATING )

ZEMİN KAPLAMA  
( FLOOR COATING )

CR-Nİ KÜPEŞTE VE KORİDOR TUTAMAKLARI  
( CR-NI AND CORRIDOR HANDRAILS )

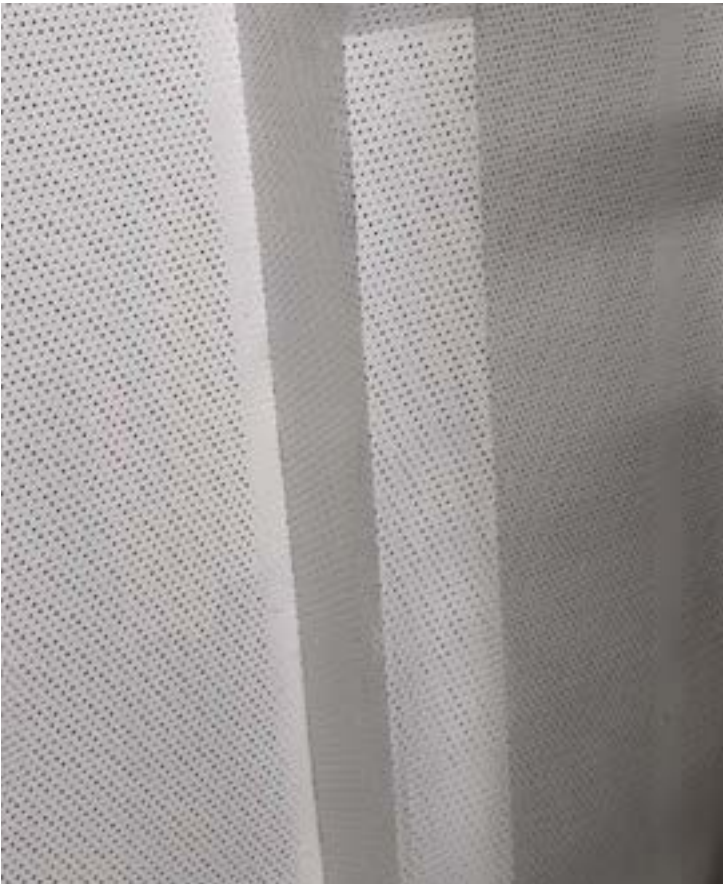
3D-2D PROJELENDİRME VE TASARIM  
( 3D - 2D PROJECT AND DESIGN )























































**ANT "A SERIES"**

**Feature Description**  
**Set Contents:** Single-double-triple-corner sofa  
**Skeleton Material:** The skeleton of the product is kiln-dried 1st quality wood. Its protection is strengthened with varnish.  
**Armrest Type:** Concave  
**Foot Material:** Chrome-plated plastic-aluminum  
**Fabric Feature:** Marin certified, imported fabric  
**Fabric Care:** It is a wipeable fabric.  
**Artificial leather - nubuck**  
**Sponge Feature:** 32 density sponge is used.  
**Session Foam:** The seat is of medium hardness.  
**Back Sponge:** The back part is a silicone sponge.  
**Functionality:** It provides comfort thanks to its shape suitable for human anatomy. The back cushions can be removed.  
**Tool Care:** Remove dust with a vacuum



**ANT "C SERIES"**

**Feature Description**  
**Set Contents:** Single-double-triple-corner sofa  
**Skeleton Material:** The skeleton of the product is kiln-dried 1st quality wood. Its protection is strengthened with varnish.  
**Armrest Type:** Convex  
**Foot Material:** Chrome-plated plastic-aluminum  
**Fabric Feature:** Marin certified, imported fabric  
**Fabric Care:** It is a wipeable fabric.  
**Artificial leather - nubuck**  
**Sponge Feature:** 32 density sponge is used.  
**Session Foam:** The seat is of medium hardness.  
**Back Sponge:** The back part is a silicone sponge.  
**Functionality:** It provides comfort thanks to its shape suitable for human anatomy. The back cushions can be removed. The back cushions are removable.



**ANT "B SERIES"**

**Feature Description**  
**Set Contents:** Single-double-triple-corner sofa  
**Skeleton Material:** The skeleton of the product is kiln-dried 1st quality wood. Its protection is strengthened with varnish.  
**Armrest Type:** Flat type with inset moon pattern  
**Foot Material:** Chrome-plated plastic-aluminum  
**Fabric Feature:** Marin certified, imported fabric  
**Fabric Care:** It is a wipeable fabric.  
**Artificial leather - nubuck**  
**Sponge Feature:** 32 density sponge is used.  
**Session Foam:** The seat is of medium hardness.  
**Back Sponge:** The back part is a silicone sponge.  
**Functionality:** It provides comfort thanks to its shape suitable for human anatomy. The back cushions can be removed.



**ANT ST SERIES**

**Feature Description**  
**Set Contents:** Single-double-triple-corner sofa  
**Skeleton Material:** The skeleton of the product is 1st quality mdf or marine contra.  
**Armrest Type:** Flat type

**Fabric Feature:** Marin certified, imported fabric  
**Fabric Care:** It is a wipeable fabric.  
**Artificial leather - nubuck**  
**Sponge Feature:** 32 density sponge is used.  
**Session Foam:** The seat is of medium hardness.  
**Back Foam:** The back part is of medium hardness.  
**Functionality:** It provides comfort thanks to its shape suitable for human anatomy.  
**Tool Care:** Remove dust with a vacuum cleaner. Never use bleach and detergent. Wipe the stained area with a wet cloth

“ Projelerinize denize dair yaşanan ve yasadılan degerler katar...”



## ANT MARINE REFERENCE PROJECTS

PROJECT NAME	KIND OF PROJECT	CLASS	CAPACITY	PRODUCTION LOCATION	DELIVERY LOCATION
H-191 RO RO	TRAIN-FERRY	RMRS	200 M	KUZEYSTAR SHIPYARD	RUSSIA
H-192 RO RO	TRAIN-FERRY	RMRS	200 M	KUZEYSTAR SHIPYARD	RUSSIA
LAILA THERESA	CHEMICAL	BVA/DMA	3500 DWT.	RMK SHIPYARD	HOLLAND
ZUBEYDE ANA	ROMORKOR	ABS		YARDIMCI SHIPYARD	TURKEY
WHITICIER	CHEMICAL TANKER	LR	3000 DWT.	GEMAK	ENGLAND
ALEV KAMAN	CHEMICAL TANKER	GL		SEDEF SHIPYARD	TURKEY
WILLY	CHEMICAL TANKER	GL	7000 DWT.	SEDEF SHIPYARD	GERMANY
CLIPPER LEADER	CHEMICAL TANKER	BVA/DMA	10000 DWT.	YARDIMCI SHIPYARD	DENMARK
NIVARA	CHEMICAL TANKER	ABS	4750 DWT.	RMK SHIPYARD	SPAIN
CITY LINES STEAMSHIP	SHIP-COMPLE REV.	TL	4600 DWT.	ISTANBUL SHIPYARD	TURKEY
BARACCUDAS	CHEMICAL TANKER	ABS	40000 DWT.	CICEK SHIPYARD	TURKEY
PULI	CHEMICAL TANKER	ABS	15000 DWT.	CICEK SHIPYARD	TURKEY
YILDIRIM	CHEMICAL TANKER	BVA	15850 DWT.	MARMARA SHIPYARD	TURKEY
MARMARA SHIPYARD	CHEMICAL TANKER	BVA	7000-16000 DWT.	MARMARA SHIPYARD	TURKEY
UZMAR TUG BOAT	BOAT	BVA		UZMAR SHIPYARD	AU-CA-EG-ENG
RMK TERSANESİ	ASFALT TANKER	TL	20000 DWT.	RMK SHIPYARD	TURKEY
DZ. K. K. DEARSAN	MILITARY BOAT	TL		GULHAN-DEARSAN SHIPYARD	TURKEY
DZ. K. K. GULHAN-DEARSAN	COAST GUARD BOAT	TL		GULHAN-DEARSAN SHIPYARD	TURKMENISTAN
ATLANTIC 1085	ATLANTIC SEAFISH	DNV		TERSAN SHIPYARD	NORWAY
NB 68	SEAFISH	DNV		TERSAN SHIPYARD	NORWAY
NB 77	SEAFISH	DNV		TERSAN SHIPYARD	NORWAY
NB 78	SEAFISH	DNV		TERSAN SHIPYARD	NORWAY
SST TSIMSHIAN WARRIOR	ROMORKOR	BVA	3200 W	UZMAR SHIPYARD	CANADA
ANKA-6	ROMORKOR	BVA	3200 W	UZMAR SHIPYARD	TURKEY
ANKA-8	ROMORKOR	BVA	3200 W	UZMAR SHIPYARD	TURKEY
WATER BUS	WATER BUS	TL	4600 DWT.	DEARSAN SHIPYARD	TURKMENISTAN
BOGACAY SERIES	ROMORKOR	BVA	3200 W	SANMAR SHIPYARD	ITALY

## ANT MARINE REFERENCE PROJECTS

PROJECT NAME	KIND OF PROJECT	CLASS	CAPACITY	PRODUCTION LOCATION	DELIVERY LOCATION
EB1-EB2-...-EB7-EB8	MILITARY BOAT	TL		DUZGIT SHIPYARD	NATO
ALB. HAKKI BURAK	MILITARY BOAT	TL	2250 DWT.	RMK SHIPYARD	TURKEY
I.TOLUNAY	FUEL TANKER	TL		RMK SHIPYARD	TURKEY
YB. K. GUNGOR	MILITARY MOAT	TL	14500 DWT.	SEDEF SHIPYARD	TURKEY
AMERICA FEEDER	CONTAINER	GL	7000 DWT.	SEDEF SHIPYARD	GERMANY
EUROPA FEEDER	CONTAINER	GL	7000 DWT.	SEDEF SHIPYARD	GERMANY
MUKADDES KALKAVAN	CONTAINER VESSEL	ABS	12000 DWT.	SEDEF SHIPYARD	TURKEY
BESIRE KALKAVAN	CONTAINER VESSEL	ABS	12000 DWT.	SEDEF SHIPYARD	TURKEY
SELMA KALKAVAN	CONTAINER VESSEL	ABS	12000 DWT.	SEDEF SHIPYARD	TURKEY
AKIN KALKAVAN	CONTAINER VESSEL	ABS	12000 DWT.	SEDEF SHIPYARD	TURKEY
KASIF KALKAVAN	CONTAINER VESSEL	GL		SEDEF SHIPYARD	TURKEY
ALINA	CONTAINER VESSEL	GL	6750 DWT.	TUZLA SHIPYARD	GERMANY
AURELLA	CONTAINER VESSEL	GL	6750 DWT.	TUZLA SHIPYARD	GERMANY
ORATUNA	CHEMICAL TANKER	BVA/DMA	2800 DWT.	GEMYAT SHIPYARD	DENMARK
ALFATEM	CHEMICAL TANKER	BVA	6500 DWT.	DEARSAN SHIPYARD	TURKEY
ZEYNEP KIRAN	CONTAINER VESSEL	BVA/DMA	29000 DWT.	TUZLA SHIPYARD	TURKEY
PROTEKSAN (50M.)	MOTOR YACHT	ABS		TURKUAZ SHIPYARD	TURKEY
PROTEKSAN (53M.)	MOTOR YACHT	ABS/MSI		TURKUAZ SHIPYARD	TURKEY
CLIPPER LEADER/10 QTY	CHEMICAL	ABS		YARDIMCI SHIPYARD	DENMARK
LIEKE THERESA	CHEMICAL	BVA/DMA	10000 DWT.	RMK SHIPYARD	DENMARK
MARIA THERESA	CHEMICAL	BVA/DMA	4000 DWT.	GISAN	DENMARK
G.A.M. NIYAZOW	CHEMICAL	LR	4000 DWT.	SEDEF SHIPYARD	TURKMENISTAN
F S DIANA	CHEMICAL TANKER	BVA/DMA	4000 DWT.	TURKTER SHIPYARD	FRANCE
TCG UFUK	MILITARY BOAT	TL		STM	TURKEY
CORVED C92	MILITARY BOAT	TL		GULHAN - DEARSAN SHIPYARD	TURKMENISTAN



## NOTES

[illegible]





[www.antdenizcilik.com](http://www.antdenizcilik.com)



[antdenizcilik](https://www.instagram.com/antdenizcilik)



[ant@antdenizcilik.com](mailto:ant@antdenizcilik.com)



[@Antdenizcilik1](https://twitter.com/Antdenizcilik1)



+90 (216) 494 28 01



Ant Denizcilik



Anadolu Mah. Adak Sok. No:7 TUZLA/ İSTANBUL

**ANT** **MARINE**  
interior design